

The Process Scheduler

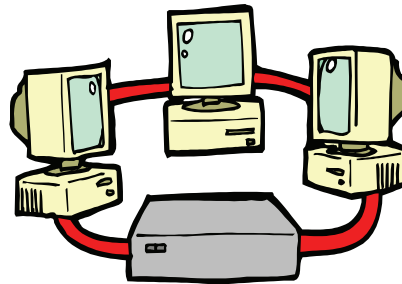


www.mc2software.com

Free Yourself from your Desktop

The Process Scheduler frees you from your desktop, and lets you tell Microsoft Dynamics GP what, when and where to perform five fundamental financial functions with your schedule in mind.

The Process Scheduler adds scheduling to your system so that you can assign reports, posting, table maintenance, routines, and more to another computer on your network. Based on a schedule that you manage and control, you can have your system work for you when you are away from your computer, or even away from the office.



Make use of all your computers on your network.

accounts, or Finance Charge assessments. You can schedule all Check Links and most Reconciliation procedures, so that you can, for instance, run table maintenance every weekend or overnight.

Schedule Reports

You can schedule just about any report to print when you want it to print. Any report that can be printed from a Microsoft Dynamics GP window, including custom reports, Financial Statements, Trial balances, and more can be scheduled. You can use any of your existing report options to specify the sorting, ranges or parameters you want to apply to the report. You can also control which printer you use for each scheduled report.

Schedule Posting

Schedule posting for any transaction that is posted from a batch. This includes General Ledger, Payables Management, Receivables Management, Sales Order Processing, Purchase Order Processing, Payroll, Inventory and Invoicing.

Customize the batch status *The Process Scheduler* checks before posting a batch: If you want to post only when the batch has been marked or approved, *The Process Scheduler* will not post unless it has been marked and approved. If your setup requires batch approval, *The Process Scheduler* will approve and mark the batch for you, and then post the batch.

Schedule Routines & Table Maintenance

You can schedule routine procedures, such as your Year-End closings, Aging customer

Choose Any Printer

You can have *The Process Scheduler* print your reports, posting journals or maintenance logs to any printer on your network, not only to the default printer.

The Dynamics Process Server

The Dynamics Process Server (DPS) is a component of the Microsoft Dynamics GP Runtime Engine. It extends the power of distributed and remote processing by enabling a computer on your network to accept tasks from any user.

The DPS performs certain process-intensive tasks, such as posting on a separate computer. The

(Continued on page 2)

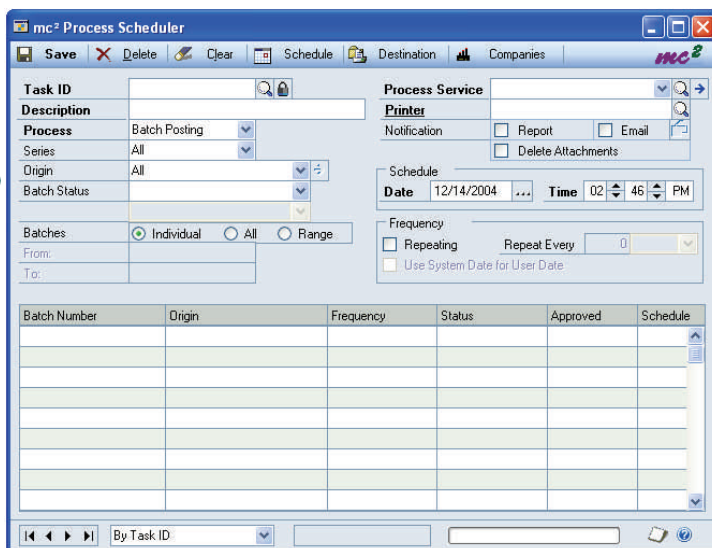
(Continued from page 1)

result is a greater return on information technology investment, because once the job is accepted by the DPS, the user is free to continue with other tasks. By using a high-power system for your DPS, you give each and every user access to the latest technology, without buying everyone a new computer.

The *Process Scheduler* dramatically extends the power of the DPS, giving you more flexibility and control. It performs more tasks and prints more reports than could normally run on the DPS.

Manage Schedules from One Window

You manage all scheduling from one *Process Scheduler* window, so you don't have to worry about conflicts with other ISV products.



About mc²...

mc² is a company dedicated to developing add-on business applications. Our goal is to take accounting software beyond the limits of standard accounting functions, and expand the capabilities of a "shrink-wrapped" accounting software package. We develop these applications for customers and partners, currently focusing on Dexterity add-on modules that integrate with Microsoft Dynamics GP.

Schedule Tasks Once...

Repeat and Repeat

You can schedule a task once, or repeat the task again and again, every day, every week, every month, etc., based on your needs. You can have the task repeat indefinitely, and cancel any task that has not started.

Start Scheduling Today

All you need is the DPS runtime installed to immediately start using *The Process Scheduler*. An installation wizard leads you through the entire setup procedure, which on an average system will finish in less than 5 minutes. Once you finish the wizard and define your printers, you can start scheduling tasks.

DPS Technology

The Microsoft Dynamics GP Process Server uses the advanced technology of Microsoft Windows called Remote Procedure Calls (RPC). A Microsoft Dynamics GP user's computer locates the DPS via TCP/IP and submits a group of tasks for execution. Once those tasks are submitted and accepted, the DPS executes or schedules the tasks. The DPS maintains client and task information for logging, performance monitoring or notification.



mc²
seven carriage drive
stamford, ct 06902
tel 203.975.1647
fax 203.357.7442

www.mc2software.com